

*Journée des Industriels du Réseau TRIGGERSEP*

# TRIGGERSEP

Un apport scientifique de pointe avec des expertises  
variées dans le domaine du Sepsis

**Djillali ANNANE**

**Hôpital Raymond Poincaré (AP-HP)**

**Lab Cell Death Inflammation & Infection UMR1173 UVSQ/INSERM**

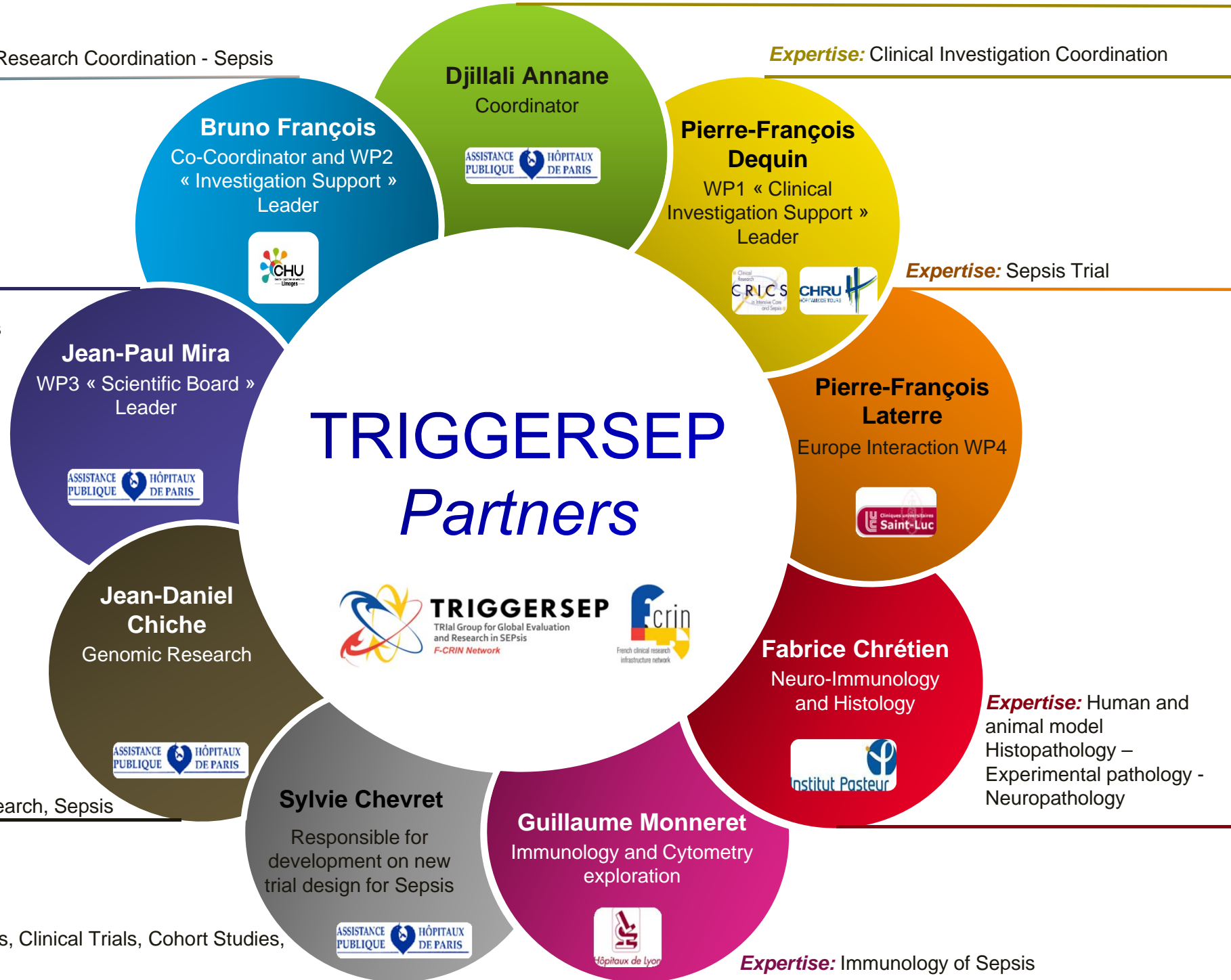


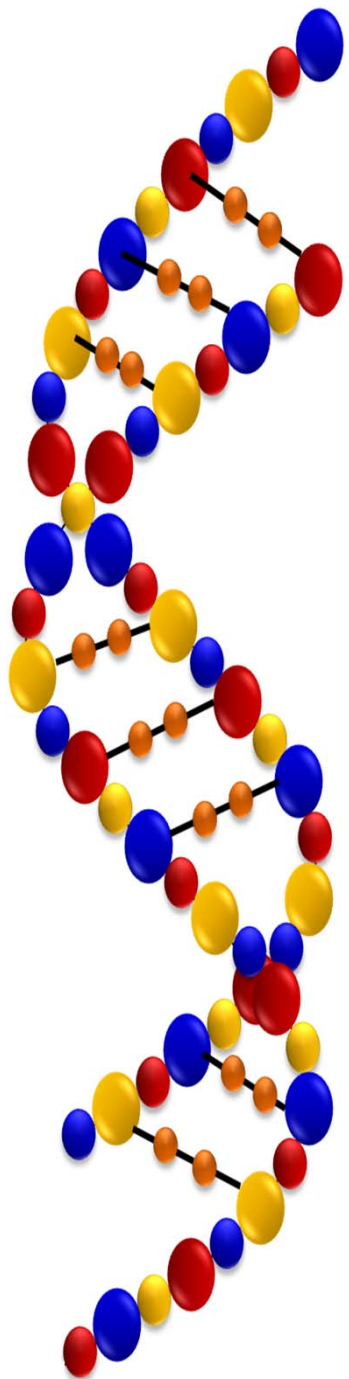
**TRIGGERSEP**

TRial Group for Global Evaluation  
and Research in SEPs

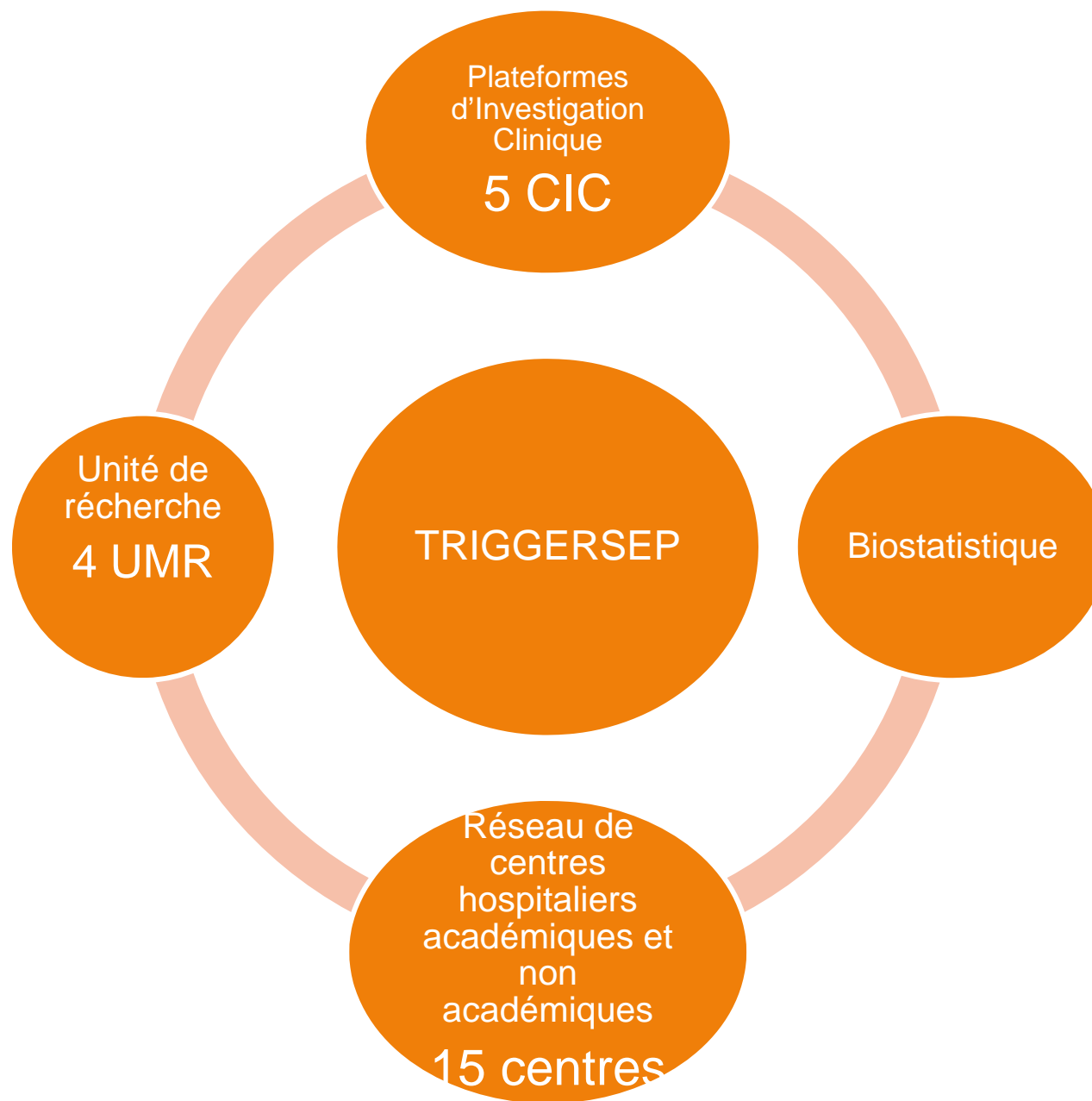
*F-CRIN Network*







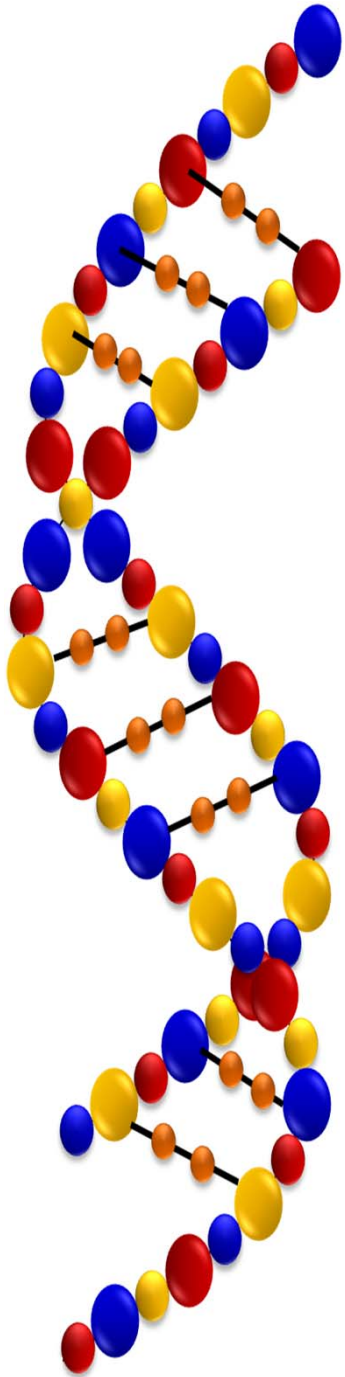
**TRIGGERSEP**  
TRIAL Group for Global Evaluation  
and Research in SEPs  
*F-CRIN Network*

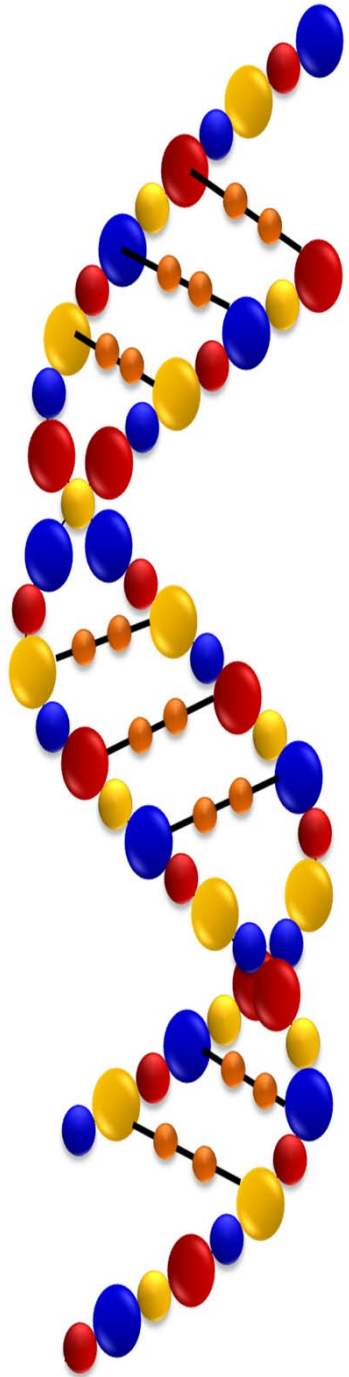


# CICs'

## *Specificities*

- ❖ **CIC1435 (Limoges)**
  - Linked with ICU
  - Organization expertise in “Emergency Trials” field
  - Coordination of CRICS effector network
- ❖ **CIC1415 (Tours)**
  - Statistic expertise
  - Methodological involvement in CRICS academic research
  - Critical Care Medicine identified as an axis
- ❖ **CIC1414 (Rennes)**
  - Data management and biostatistics in Sepsis therapeutic trials
  - Pharmacology and pharmaco-epidemiology of Sepsis
  - Specific team “Pharmacology of Sepsis and septic shock” [quadrennial 2012-2015]
  -
- ❖ **CIC1429 (Garches)**
  - Scientific expertise of the coordinating physician in therapeutic trials on Sepsis
  - Scientific expertise in medical devices and other innovative technologies
- ❖ **CIC1417 (Cochin Pasteur)**
  - Scientific expertise in vaccines with possible development
  - High dynamic of research of the site in Resuscitation and Sepsis field



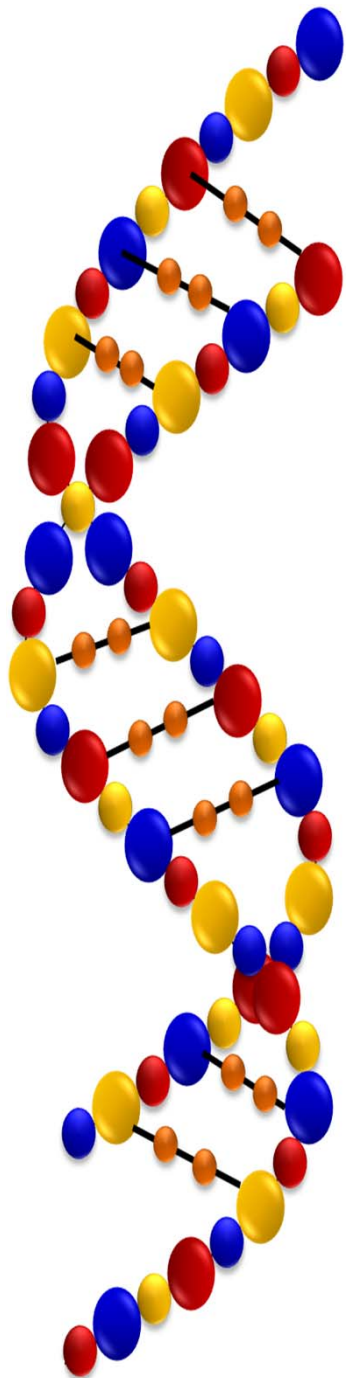


# Hospitals network

## TRIGGERSEP investigation network:

- ❖ 15 academic and non-academic hospitals in France and Belgium
- ❖ 310 beds (total for ICU and emergency services)
- ❖ More than 10 100 admissions in 2014 including 60% of ventilated patients.
- ❖ 2750 septic patients (severe sepsis and septic shock) per year
- ❖ 3451 patients participating in clinical trials in 2014

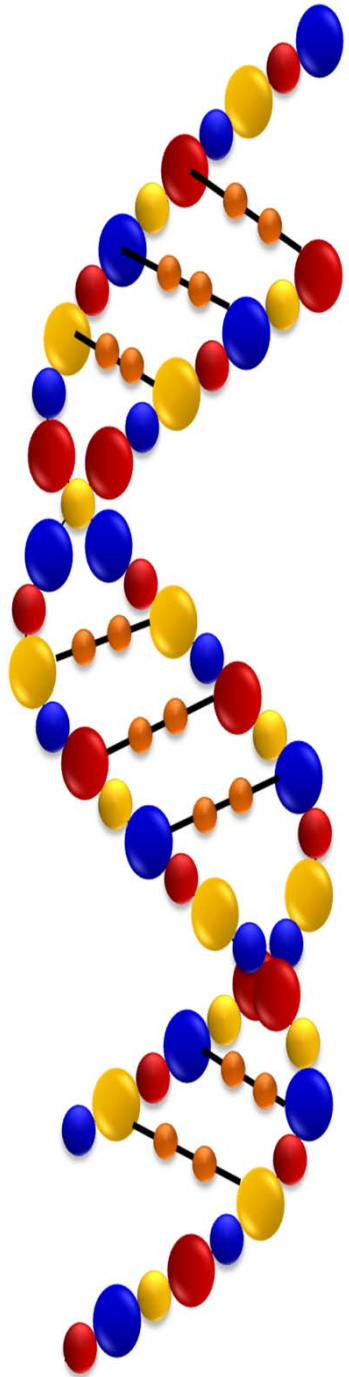




# Lab facilities and links to translational research

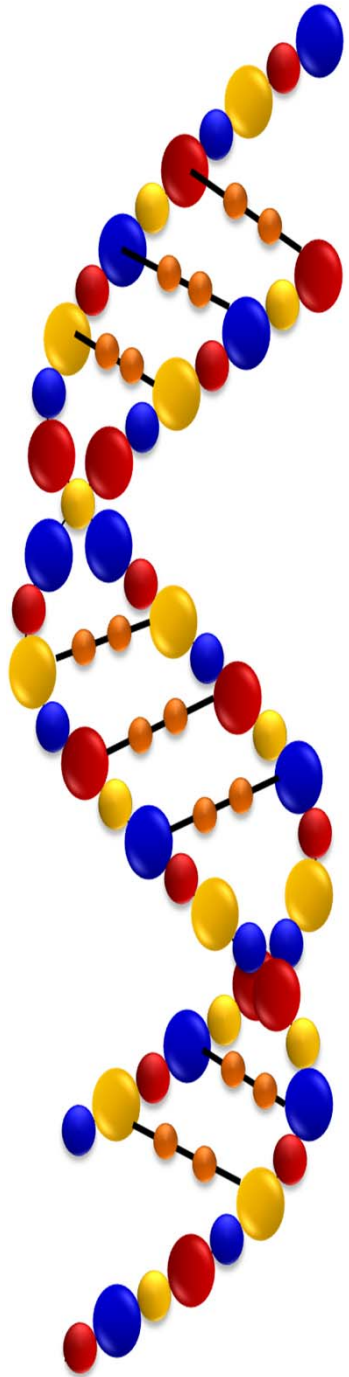
## 5 UMR:

- ❖ Jean Daniel Chiche & Jean Paul Mira « Innate immunity, Toll-like receptors & variability of inflammatory response » INSERM U1016, Cochin Institute.
- ❖ Guillaume Monneret joint unit “Pathophysiology of injury-induced immunosuppression” (Lyon I – HCL – BioMérieux)
- ❖ Fabrice Chrétien « Research Unit Human Histopathology and animal models, Institut Pasteur, Paris
- ❖ Sylvie Chevret “ECSTRA, INSERM U1153, Paris Diderot University (Biostatistics and Clinical Epidemiology), Paris,
- ❖ Djillali ANNANE “Cell Death Inflammation & Infection, INSERM U1173, UVSQ, Montigny Le Bretonneux



# International Recognitions

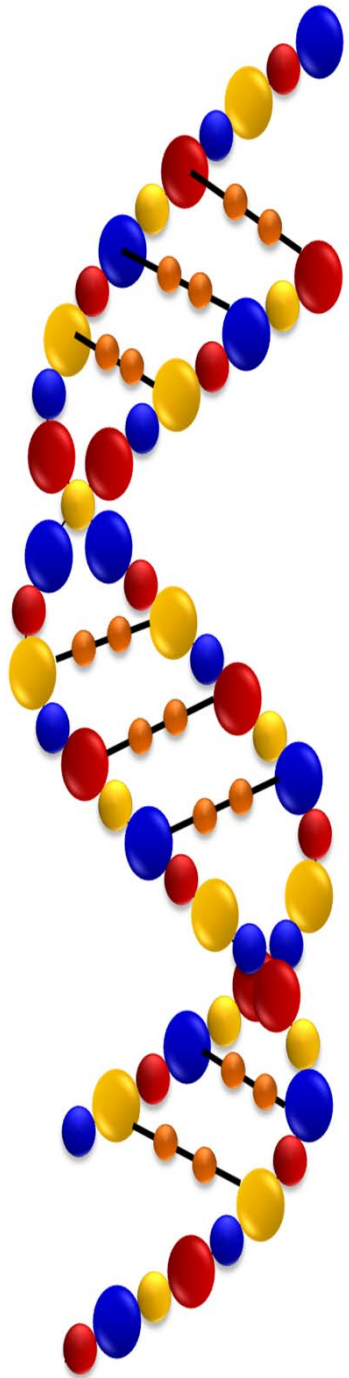
- ❖ International Task Force on Sepsis Definition (Jean Daniel Chiche & Djillali Annane)
- ❖ Surviving Sepsis Campaign (Jean Daniel Chiche & Djillali Annane)
- ❖ International Sepsis Forum (Jean Paul Mira)
- ❖ SCCM/ESICM Task Force on Corticosteroid Insufficiency in Critical Illness (Djillali Annane)
- ❖ Senior coordinators for many international studies
- ❖ Board members of trials committees, of scientific journals, meetings



# Scientific Achievements

- ❖ NEJM: 12
- ❖ JAMA: 16
- ❖ Lancet: 15
- ❖ Nature Medicine: 2





# TRIGGERSEP

## *Scientific Project*

***Toward personalized medicine for sepsis!***

### ❖ **Individual vs. population-based approach**

- Biomarkers
- Immuno-Monitoring
- Genomic data

### ❖ **Innovative tools for sepsis investigations**

- Databases – datamining / « big » data
- Adaptive designs
- Research on the influence of qualitative aspects of investigation centres

